



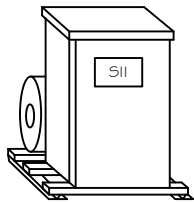
# Steelman Industries, Inc.

P.O. BOX 1461 2800 Hwy. 135 Kilgore, Texas 75662

PH# (903) 984-3061

FAX# (903) 984-1384

## Application



**H-A-S**  
**Rotary Phase Convertor**  
**Converts**  
**Single Phase Power**  
**Into**  
**Three Phase Power**

## Model Numbers

**ODP MODEL (Open Drip Proof)**

**R-100/200-230-HD**

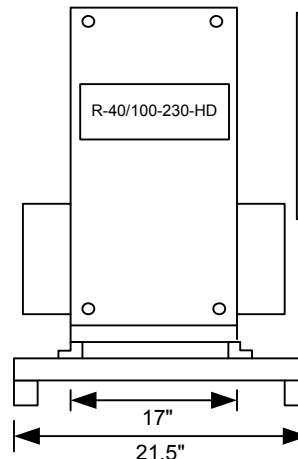
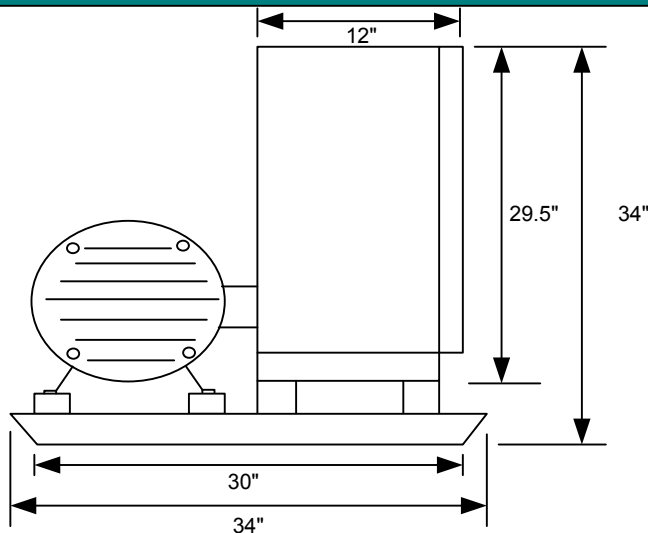
(Two Piece Unit)

**TEFC MODEL (Totally Enclosed, Fan Cooled)**

**R-100/200-230-HD/TEFC**

(Three Piece Unit)

## Measurements & Specifications



Weight: 1380 lbs. ODP  
1980lbs. TEFC

ODP Unit: Two pieces each at these dimensions.

TEFC Dimensions: Three Pieces each at these dimensions.

**\*Assembled, Tested, and mounted on steel base ready for installation.**

## Electrical Specifications & Service Requirements

Voltage Input: 230

Voltage Output: 230

Idle Current: 36 A ODP      42 A TEFC

Inrush Current: 1400 A ODP      1320 A TEFC

Largest Motor Starting Capacity: 75HP

Total Running Horse Power Capacity: 200HP

Note: Convertor should not run for a long period of time with no load.

600A Disconnect Switch  
(2) 500 MCM Wire (Recommended)

